

## KOBI LPR app for Dahua cameras



### Characteristics:

- Accuracy more 95%
- Detection and recognition time 40 ms
- Detection and recognition vehicle speed 190 km/h
- Support “black list” of plates
- Setting zone of recognition
- Customizable recognition convolution
- Messenger integration Telegram
- Recognition of standard, two-line and inverse plates
- LPR online monitoring in browser
- Transferring data to ZetPro VMS
- Integration capabilities
- Easy setting from web browser or ZetPro VMS

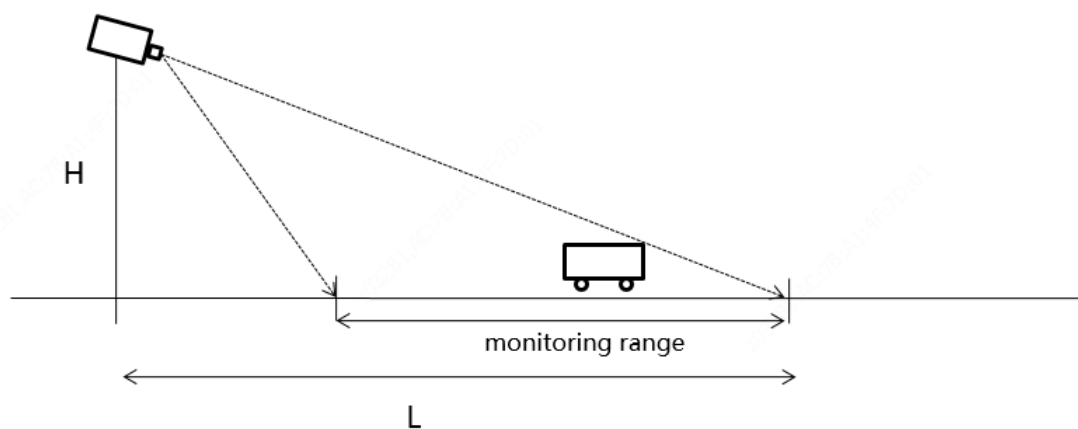
## Specifications

Kobi LPR app	
Recognition time	40 ms
Recognition speed	190 km/h
Supported camera models	Dahua 5-series and DHOP
Angle of LPR	<30°
Angle of LPR horizon	<5°
Compression	Ultra 265, H.265, H.264
IPC resolution	2 mp 4 mp, 8 mp
LPR at day	Yes
LPR at night	Yes
HLC	Supported
BLC	Supported
WDR	Supported
Black list	Supported
Integration with third-part app	Supported
Classic plates	Supported
Two-line	Supported
Inverse plates	Supported
Ready integration	Messenger Telegram
API	Supported

## Installation IPC for LPR

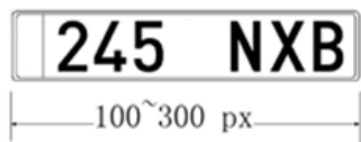
- H – installation height
- L – maximum monitoring range

Recommended –  $L < 5H$  ( $H < 5$  m)

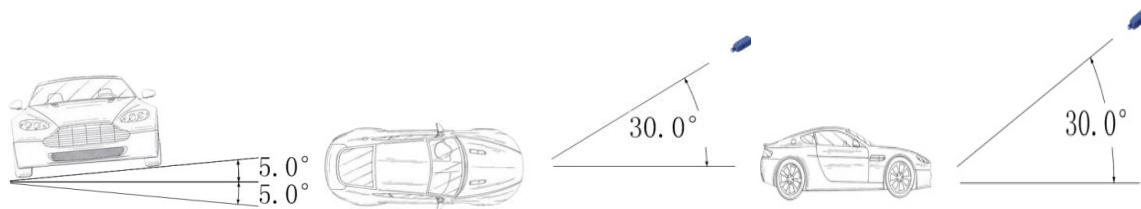


## Vehicle license plate size

- Minimum size – 100 px
- Maximum difference – 200 px (if min size – 100px, then max size no more 300px)



## Installation angle



## Supported countries for Kobi LPR app

- Ukraine
- Great Brittan
- Australia
- France
- Italy
- Turkey
- Poland
- Spain
- Luxembourg
- Germany
- Lithuania
- Russia
- Moldova
- Belarus
- Turkmenistan
- Kazakhstan
- Singapore

Kobi Software

[lpr.kobi.ua](http://lpr.kobi.ua)

[zetpro.com](http://zetpro.com)