

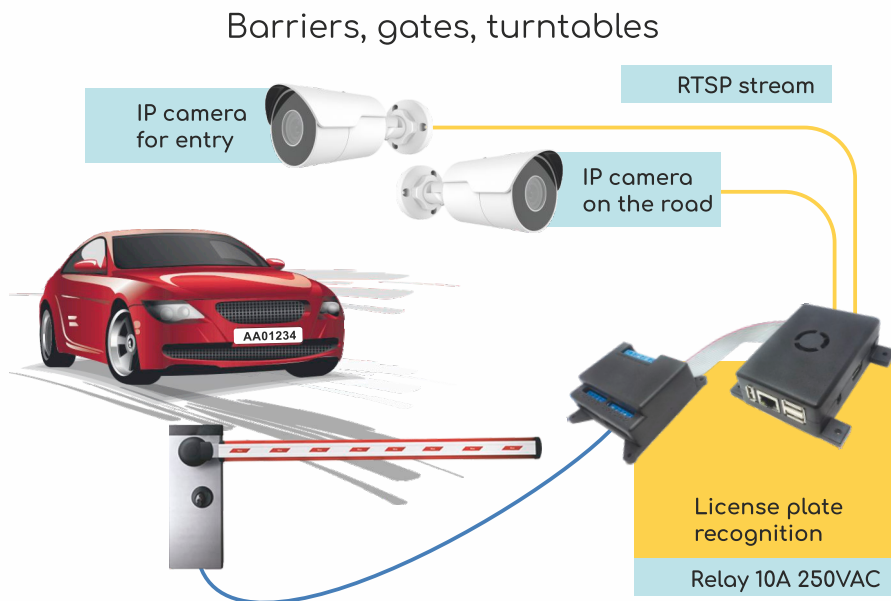


2021

zetpro.com

LPR BOX for Checkpoint

Principle of operation



Application area

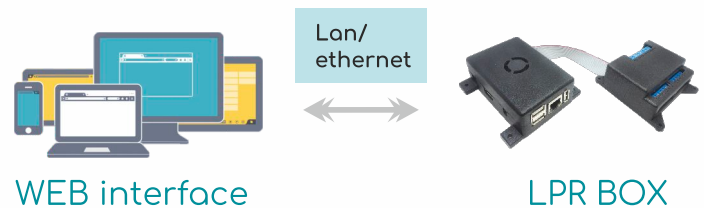


Main characteristics

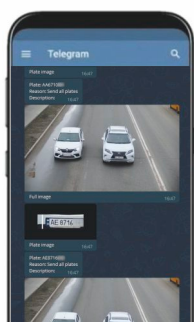
- Capture and identify vehicle numbers
- Local and / or remote database
- Command to open in the case of a car from the "white" list
- Support for one / two-way gearboxes
- Recognition accuracy over 98%
- WEB application for configuration and monitoring
- Generation of reports for a certain period of time
- Control of the number of parking spaces
- Recognition of the make and model of a car
- Support for RTSP protocol
- Recognition of license plates from 23 countries of the world
- Autonomous work without a PC
- White list of numbers
- Small overall dimensions
- Easy to install

Principle of operation

- LPR BOX configuration is carried out using the WEB interface
- Local and / or remote connection
 - Online monitoring
 - Editing the white list of numbers
 - Report generation
 - Device settings



Telegram manager

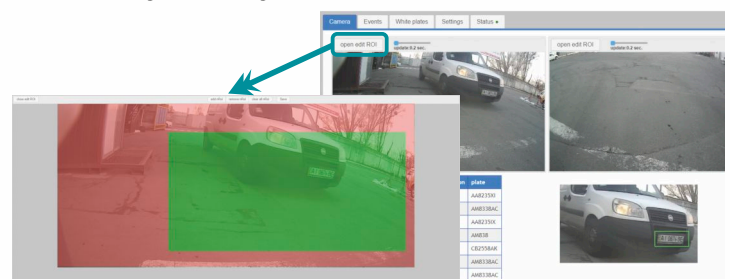


Access to the automated checkpoint system is carried out through the Telegram application

- Quick access to the system
- Monitoring the passage of their cars
- Manual control of the barrier
- Android, iOS, Windows, MAC

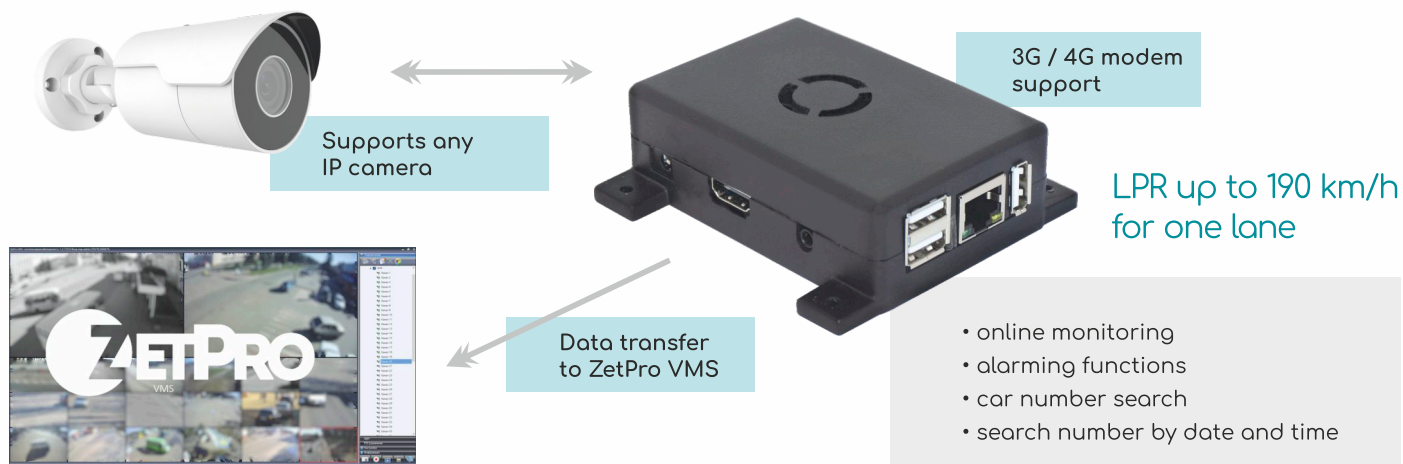
WEB interface

- Online video stream from cameras
- List of recognized numbers
- Screenshot of the room
- Setting the recognition area



LPR BOX "Cyclops"

Stand alone solution LPR BOX «Cyclops»



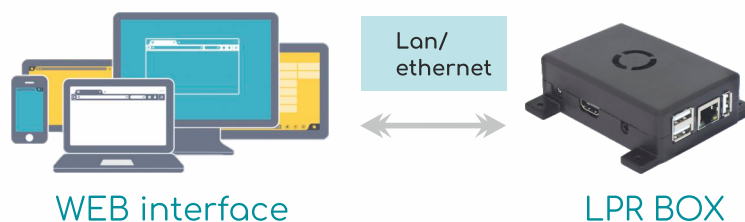
Main characteristics

- Capture and identify vehicle numbers
- Local and / or remote database
- Recognition accuracy over 98%
- WEB application for configuration and monitoring
- Generation of reports for a certain period of time
- Support for RTSP protocol
- Recognition of license plates from 23 countries of the world
- Autonomous work without a PC
- Small overall dimensions
- Easy to install

Device settings

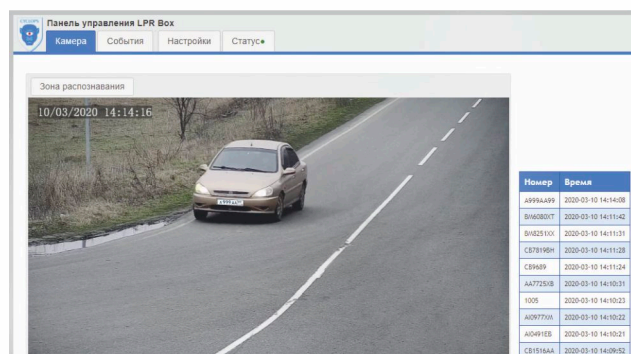
LPR BOX configuration is carried out using the WEB interface

- Local and / or remote connection
- Online monitoring
- Generation of reports
- Device settings



WEB interface

- Online video stream from cameras
- List of recognized numbers
- Screenshot of the room
- Setting the recognition area



Integration with third-party software

LPR BOX "Cyclops" allows you to upgrade your license plate recognition analytics to almost any software. Using our integration protocol, you can receive all LPR data on your software. This feature allows you to improve old software with minimal investment. (integration protocol is provided free of charge)

```

send_event
enabled
ip 192.168.1.54
port 5073
device_id 0000000016
    
```

LPR Application for Dahua Series 5 and 7 Cameras

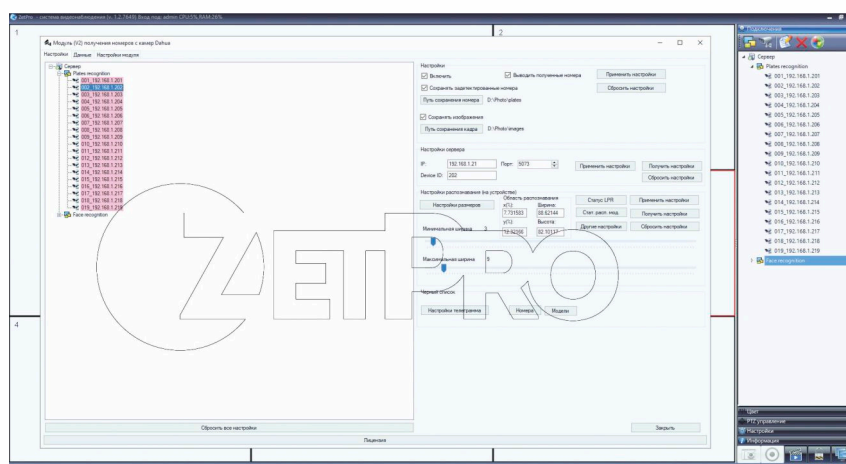
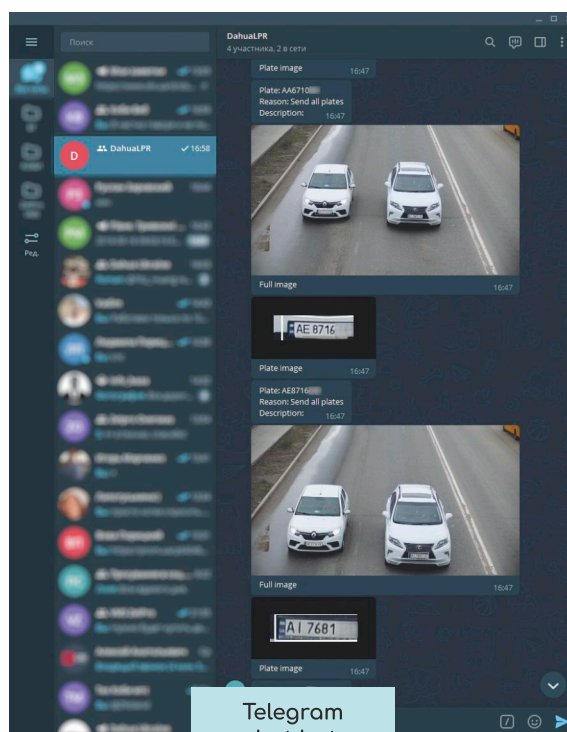
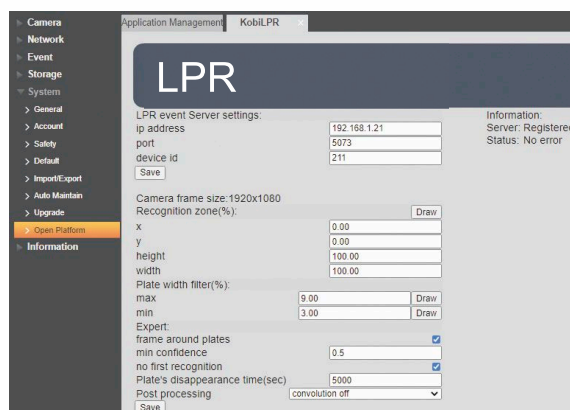
This application is designed for license plate recognition on board Dahua cameras. LPR is compatible with the 5th and 7th series of cameras.

Technical specifications:

- High recognition accuracy - 95%
- Time of detection and recognition - 40 ms
- Support for black list of numbers
- Telegram notifications about all LPR events from the blacklist
- Easy application configuration via web interface
- Work with cameras 5 and 7 series Dahua
- Data transfer to ZetPro VMS

The application supports the blacklist of numbers and can send alarm notifications or all the results of recognized numbers to the chat of the Telegram messenger.

In addition, the Dahua camera with the LPR application can work with the ZetPro VMS software. In this configuration, all data is stored on the server, allowing the system to be scaled for large projects.



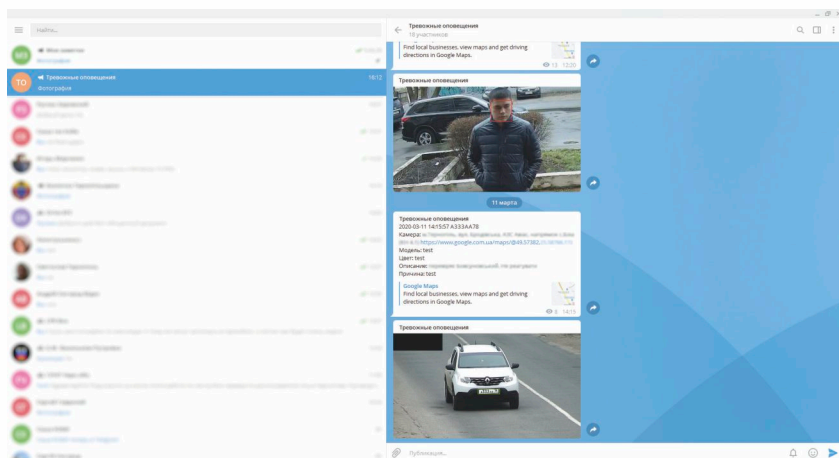
ZetPro VMS

VMS ZetPro Software

VMS ZetPro Soft software is designed to be able to work properly with the various video surveillance vendors' systems. Its main features are scheduled and/or motion-related recording of a video archive. VMS ZetPro Soft serves as the core connecting intelligent modules such as - license plate recognition, face recognition, automatic body temperature control.



Alarm Telegram bot



A special chat-bot designed for sharing notifications about alarming events via the Telegram messenger.

- Works as part of VMS ZetPro Soft
- Alarm notifications of black and white lists of license plate/face recognition
- Screenshots of cars and faces in messages
- Full description of the alarm event
- Cross-platform

License plate recognition module for ZetPro VMS software

This module is designed to be able to recognize car license plates from the cameras with LPR on board or using the video stream (RTSP) from the IP camera of any vendor.

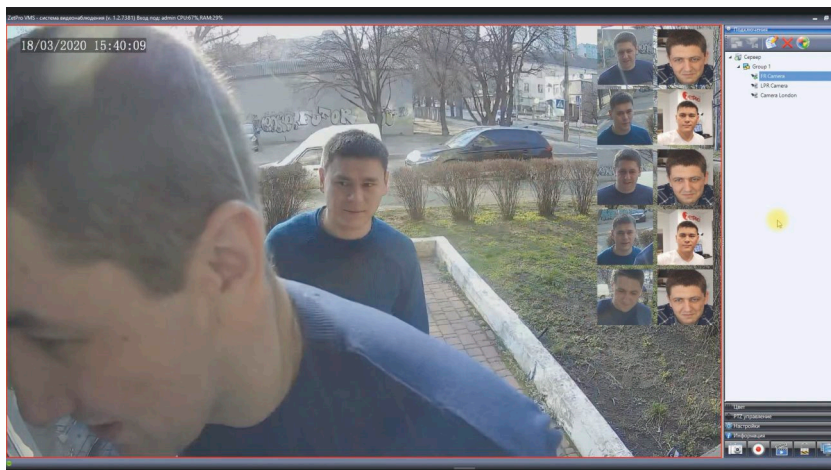
- Module can able to recognize car license plates within 23+ countries of the world
- License plate recognition works effectively at the velocity up to 260 km/hour
- Black and white lists functionality
- Recognition of the standard, two-line, and colored license plates
- Chatbot for sending alarming events via the Telegram messenger, within the groups as well
- Checkpoint operating mode functionality



Face Recognition module for ZetPro VMS software

This module allows face recognition and real-time analysis to compare against black and white lists records. Compatible with ZetPro, UNV, DAHUA cameras (with the "Face Detection" function)

- Recognition accuracy 95-99%
- Black and white lists functionality
- "Find the person" functionality for per image, full name, age, gender
- Local and/or remote database (PostgreSQL)
- Real-time monitoring
- Audible and visual alarms for the blacklist notifications
- Chatbot for sending alarming events via the Telegram messenger
- Checkpoint operating mode functionality

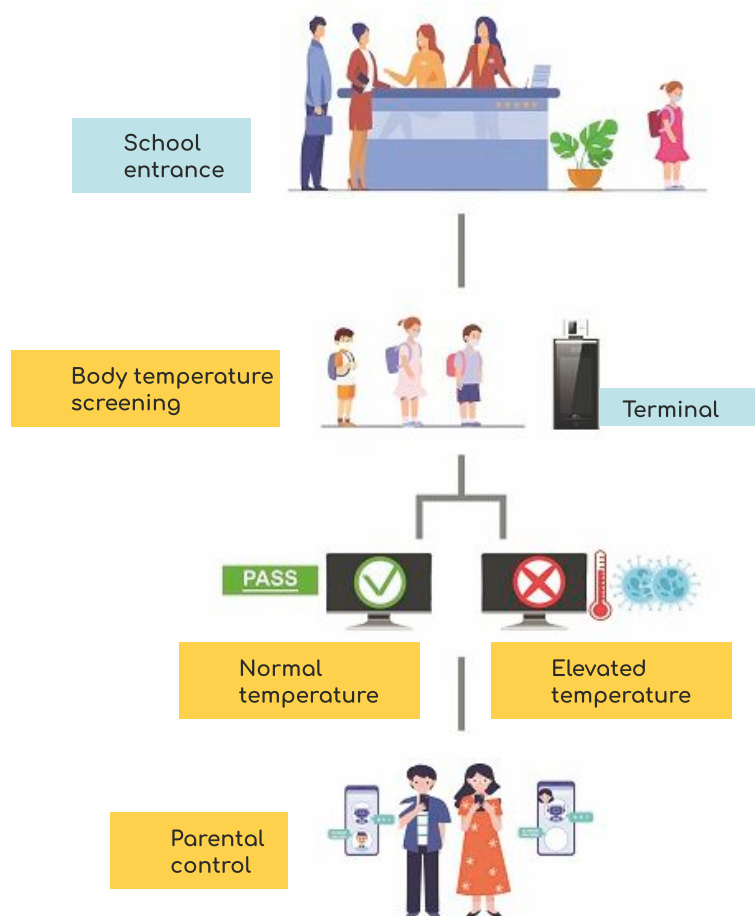


Automatic body temperature control and parental control

This module allows to measure body temperature and notify parents (or any responsible person) about their child's stay in an educational institution (Fully compatible with Dahua Temperature Terminal)

- Temperature measurement accuracy $\pm 0.5^{\circ}\text{C}$
- Face recognition accuracy 95-99%
- Black and white lists of person functionality
- Personalized notifications for parents
- Alarm notifications of the "black" list of persons in a separate Telegram group

The messages received via Telegram chat contain full information, e.g when the child came and left the school, his temperature and photo





zetpro.com

67
256
234 00 2
11 25 18
01 27 11
1208 4

8324 001 551

